

Fast and convenient oral fluid drug detection  
for employment and insurance testing.

# T-Cube®

Oral Fluid Drug Test

Appropriate for employment and  
insurance testing, the T-Cube®  
oral fluid drug test offers recent  
use detection and ease of use.



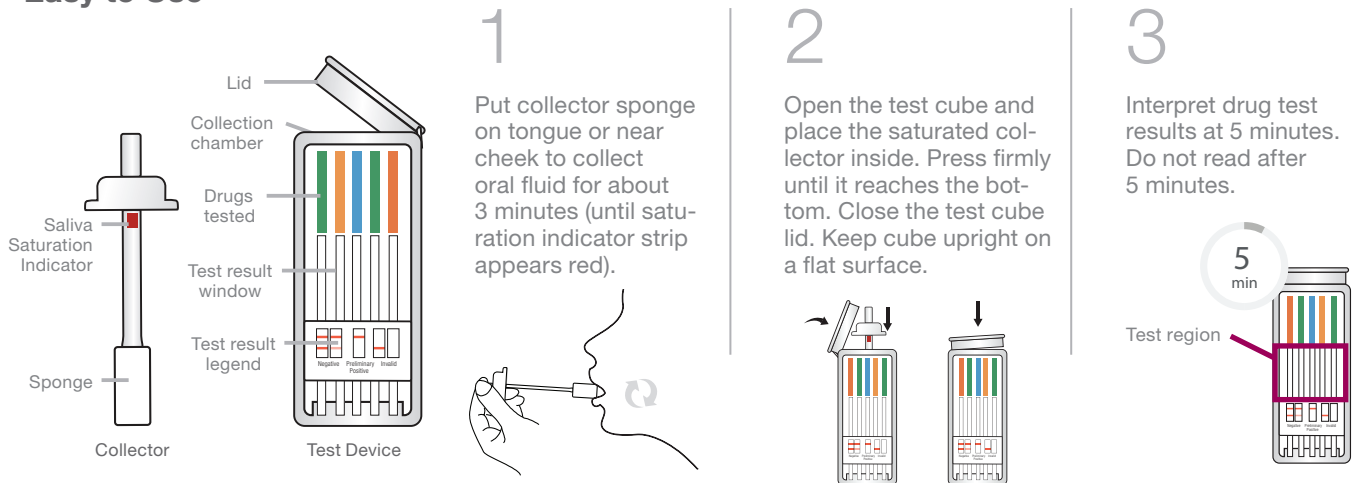
*For in vitro diagnostic use.  
For use in employment and insurance testing.*

# T-Cube® Oral Fluid Drug Test

With numerous oral fluid drug test devices on the market, it is important that you select the one best suited for your particular setting and needs. The **T-Cube®** oral fluid drug test is intended for employment and insurance testing, and offers fast and convenient oral fluid detection for multiple drugs assays. Oral fluid drug screening simplifies collection processes and protects against specimen tampering—allowing you to make informed decisions about substance abuse.

- 6-10 drug configurations available for a fully customized oral fluid testing program
- Saliva saturation indicator ensures sufficient specimen volume is collected
- Eliminates need for gender-specific observation and limits adulteration and tampering
- Drug test results in 5 minutes

## Easy to Use



PRODUCT PROCEDURE NOTE: Refer to product insert for complete instructions, limitations, and warnings. For in vitro diagnostic use. For use in employment and insurance testing. The assay provides a qualitative, preliminary test result. A more specific analytical method must be used in order to obtain a confirmed result. Gas chromatography-mass spectrometry (GC-MS) or liquid chromatography-tandem mass spectrometry (LC-MS/MS) are preferred confirmatory methods. Professional judgment should be applied to any drug test result, particularly when preliminary results are positive.

## Ordering Information

Item #	T-Cube® Oral Fluid Drug Test	Packaging
TCube-6MB	<b>6 Panel:</b> AMP50, BZO30, COC20, MET50, OPI40, THC25	25 tests per box
TCube-6O	<b>6 Panel:</b> AMP50, COC20, MET50, OPI40, OXY20, THC25	25 tests per box
TCube-8BUP	<b>8 Panel:</b> AMP50, BUP5, BZO30, COC20, MET50, OPI40, OXY20, THC25	25 tests per box
TCube-9BUP	<b>9 Panel:</b> AMP50, BUP5, BZO30, COC20, MET50, MTD30, OPI40, OXY20, THC25	25 tests per box
TCube-10BUP	<b>10 Panel:</b> AMP50, BAR60, BUP5, BZO30, COC20, MDMA100, MET50, OPI40, OXY20, THC25	25 tests per box
TCube-10MO	<b>10 Panel:</b> AMP50, BAR60, BZO30, COC20, MDMA100, MET50, MTD30, OPI40, OXY20, THC25	25 tests per box

**Drug Tests:** Amphetamine (AMP), Barbiturates (BAR), Buprenorphine (BUP), Benzodiazepines (BZO), Cocaine (COC), Methamphetamine (MET), Ecstasy (MDMA), Methadone (MTD), Opiates (OPI), Oxycodone (OXY), Marijuana (THC) 11-nor- $\Delta^9$ -THC-9-COOH.